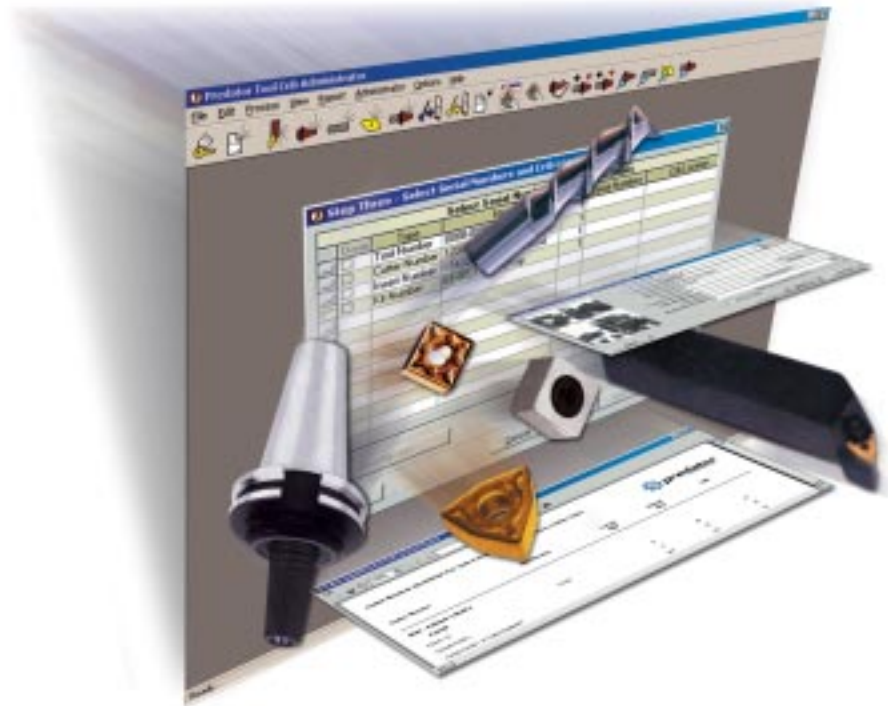


# Predator TOOL CRIB™

TOOL TRACKING & INVENTORY CONTROL



#### Reduce or Eliminate:

- Tooling costs
- Expedited shipping costs
- Paper and index cards
- Manual inventory control

#### Organize your tool crib by:

- Tool numbers
- Tool revisions
- Tool names
- Part references
- Material references
- Insert references
- Cutter references
- Multimedia attachments
- Notes
- Multiple vendor numbers
- ISO tool number

# Organize

your tool crib  
and stay efficient



GEARED FOR MANUFACTURING™

# Predator TOOL CRIB™



## Standard Features:

- Automated Tool Management
- Automated Ordering
- Track Lost, Broken or Scrapped Tools
- Reference Tooling Lists
- Maintain Tool Certification
- Relational Database
- Tooling Consolidation
- Easy-To-Use Wizards
- Electronic Attachments
- ISO 900x History
- 80 Standard Reports
- Custom Reports
- On-Line Help

## 2 Upgradeable Configurations:

- Tool Crib Administrator
- Tool Crib Client



## Automated Tool Management



### What is Predator Tool Crib?

Predator Tool Crib electronically automates the tracking and organization of your tooling inventory, including tools, cutters, inserts and tool assemblies. It helps improve manufacturing processes by empowering tool room personnel, shop floor personnel, engineers and management with an automated, interactive tool management system that operates around the clock.

## Reduce Tooling Costs

**What tools do we already have and where are they?** Excess tooling is often ordered because tools become unaccounted for. Predator Tool Crib provides an accurate inventory of every tool and can identify where individual tooling should be at any time. Most manufactures save up to 25 percent of their annual tooling costs by maintaining a computerized tooling inventory.

## Track Disposable Tooling

**How much disposable tooling are we consuming?** Predator Tool Crib tracks disposable tooling, such as inserts, separately from standard tooling. Consumption reports can easily be generated by person or machine with weekly, monthly quarterly or yearly quantities.

## Automated Ordering

### What tooling do we need to order?

Predator Tool Crib maintains a minimum reorder level for every tool, cutter and insert. It then compares this with current inventory levels and a wizard automates the reorder process. This process records tooling costs over time, which allows vendor performance to be analyzed.

Another benefit to automated reordering is the reduction of expedited shipping costs as a result of last minute tooling orders.

## Track Lost, Broken or Scrapped Tools

**Who is accountable for lost, broken or scrapped tools?** Predator Tool Crib tracks lost, broken and scrapped tools by providing a history that captures lost tools, who reported them lost, who checked them out last, and where they should physically be. Broken and scrapped tools are officially scrapped after an Inspection Rejection Report (IRR) is completed. This report provides a tracking mechanism for in-house or outsourced rework, and for scrapping tool when all else fails. Optionally, a conditional use mechanism can also be applied to allow tooling to be used for a limited time to complete a specific job prior to completing the IRR process.

## Reference Tooling Lists

### What tools are used for specific parts or materials?

Manufacturing engineers or shop floor personnel can use Predator Tool Crib to build lists of reference tooling to be used for specific materials or part numbers. New personnel can quickly capitalize on proven processes and reference reports can easily be generated to identify preferred tooling, material and/or part.

*Predator Tool Crib leverages powerful database integration to automate the tracking and organization of your tooling components. Reports can then be generated to analyze and improve your process.*



# TOOL TRACKING & INVENTORY CONTROL

## Maintain Tool Certification

### What tools need to be certified for use?

Predator Tool Crib helps maintain tooling quality automatically by identifying tools that require certification or reworking. Predator Tool Crib can also maintain step-by-step rework instructions that include reference drawings, pictures and even video clips. Rework instructions can be broken down to specific steps for initial and periodic rework with some steps being required and others being optional. The tool room manager can then add or modify work instructions as needed and a series of reports can be generated to track certification on all rework processes.

## Relational Database Power

**Why Predator Tool Crib?** Manufacturers routinely try to manage thousands of tools and tooling components by memory, index cards, spreadsheet files, an ERP/MRP

inventory system, or custom applications. These systems often fail or are inaccurate. Predator Tool Crib utilizes a powerful, open architecture, relational database that provides structure, simplified input and reduced tooling processes.

Predator Tool Crib includes support for Oracle®, Microsoft Access® and SQL Server. Furthermore, every tooling related process can be performed simultaneously by multiple personnel using Windows-based PCs at

multiple locations in realtime.

## Empower Personnel

**Who can benefit from Tool Crib?** Shop floor personnel have greater accountability by automating the Check In and Check Out Report of lost or broken tools. This also insures that actual shop floor activities and feedback are reported correctly. By adding bar code readers, tooling processes can be automated to the point of simply swiping bar codes. Manufacturing engineers can easily query the status of tools and identify tools for specific materials or parts right from their PCs. They can also continue to design and document improved tooling methods and processes that will be used in the future. Managers and administrators can automate tool orders, produce electronic inventories, generate scrapped tooling reports, track tooling certifications, and many other processes.

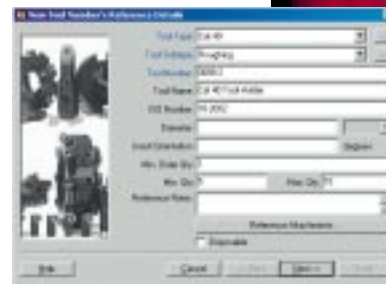
## Tooling Consolidation

**How does organizing my tooling translate into savings?** As a tool crib gets larger, manual or semi-automated inventory methods can quickly become difficult to maintain. To complicate matters, if a physical tool crib or centralized storage area is not used, manufacturing personnel are often forced to store tooling in their work spaces. By implementing Predator Tool Crib, thousands of dollars in excess tooling can be saved with a centralized inventory and automated recorder process.

## Easy To Use Wizards

### How easy is it to automate my tool crib?

Predator Tool Crib takes advantage of wizards to automate all of your tooling processes and maintenance needs. Wizards are used to automate ordering tools, receiving tools, certifying tools, and checking tools in and out, among many other tooling processes.



Easy-to-use wizards makes organizing your tooling components easy with Predator Tool Crib.

Predator Tool Crib provides more than 80 reports, including:

- Tools and Serial Number List
- Tool History
- Checked Out Tool
- Lost and Scrapped Tools
- Rework Information and IRR
- Part Reference
- Material Reference
- Work Summary
- Tool Ordering
- Tool Rework
- Inventory
- Security
- Component
- Component History

ORDER  
LING

PREDATOR  
TOOL  
CRIB

DATA  
BASE

CHECK  
OUT

CONSUMED  
SCRAPPED  
INACTIVE  
LOST





Tool Crib tracks products from leading tooling manufacturers, such as:

- Briney Toolholding Systems
- Cogsdill Tool Products, Inc.
- Command Tooling Systems
- Duramet Corp.
- Duramill
- Guhring, Inc.
- Hamilton Tool Co.
- ISCAR Tools, Inc.
- Kennametal Inc.
- Kyocera Industrial Ceramics
- Landis Gardner
- Lyndex Corp.
- Manchester Tool Company
- McQuade Industries, Inc.
- Mitsubishi Carbide
- Sandvik Coromant
- SGS Tool Company
- Stellram
- Sumitomo Electric Carbide, Inc.
- Titex Tools, Inc.
- Toshiba Tungaloy America, Inc.
- Tyson Tool Company
- Union Butterfield Corporation
- Valenite
- VNE Corporation
- Walter Waukesha, Inc.

## Electronic Attachments

### What about tooling notes and instructions?

Predator Tool Crib can assign any electronic file as a reference attachment to specific kits, tools, cutters or inserts. For example, a video clip or written instruction on safety

can be attached to a

tool for an operator to review before use.

Predator Tool Crib also supports specific attachments, which

allows an attachment,

such as a bitmap of a

finished tooling

assembly, to only be viewable when that

specific assembly is requested.



*Generate standard or custom reports to analyze your tooling use and integrate your data with ERP or MRP systems.*

## ISO 900x History

### Are you meeting ISO 900x certification?

Tools can be revised with a complete date and time-based history as engineering changes are made to meet ISO 900x requirements. Alternate tools can be created to facilitate expedited or backup manufacturing methods. Histories for all tooling processes can easily be implemented enterprise-wide automatically.

## 80 Standard Reports

**Want to measure tooling usage with realtime shop floor reports?** Predator Tool Crib includes more than 80 standard reports. Each report has numerous options and filters to drill down to the appropriate level of detail. All reports can be exported to Microsoft Excel® or HTML documents for further analysis or processing.

## Custom Reports

**Want to create your own reports?** Custom reports that integrate tooling data with ERP or MRP systems can be developed with several third party reporting tools, such as Crystal Reports and Microsoft Access.

## On-line Help

**Need help and no time to read the manual?** Predator Tool Crib includes on-line help with concise and up-to-date documentation.

## Service and Support

**Who will help set me up and keep me operational?** Predator Software products and services are available through a global network of 100 value-added resellers. As part of the Predator family, they can provide the expertise necessary to help you organize your tool inventory and reduce tooling costs with Predator Tool Crib.

## System Requirements

### Windows® 98/2000 and NT

- Intel® Pentium®-based processor or equivalent
- Internet Explorer® 5.x or later
- 64 MB RAM
- 40 MB hard disk space

## CONTACT INFORMATION

Local Authorized Sales and Service:

For more information, or for the name of a Predator Reseller near you, contact us at:

8835 SW Canyon Lane, Suite 300

Portland, OR 97225

Phone: (503) 292-7151

Fax: (503) 292-7671

info@predator-software.com

ftp.predator-software.com

www.predator-software.com

Predator Software, The Predator logo, Geared for Manufacturing, Predator Tool Crib, Predator CNC Editor, Predator DNC, Predator Desktop, Predator MDC, Predator Gage Crib, Predator Traveler, and Predator Grizzly Cable are trademarks of Predator Software Inc. All other trademarks are the property of their respective owners.

© 2000-2001 Predator Software Inc. All rights reserved. Printed in the USA.

